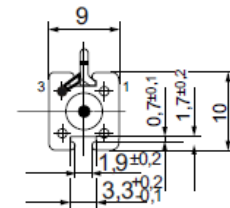
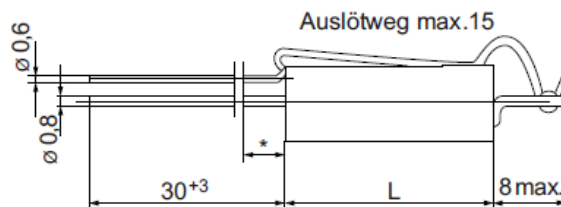




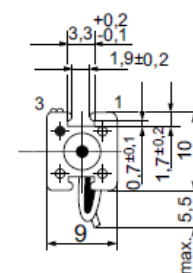
GENERAL FEATURES

The resistors of the FTH series are low-power resistor, the main characteristics for this resistors are the compactness and the small dimensions that permit to use this products on electronic printed boards. The terminal may be tinned and permit a fast insert on electric board. Unlike to the FH model, these resistors are equipped with an external fuse which protects the resistor by current overload, the fuse can be re-enable by welding.

FTH 0920
(FTH 0918)
FTH 0925
FTH 0938



FTH 0950
FTH 0975



Note :

Ta = Ambient Temperature

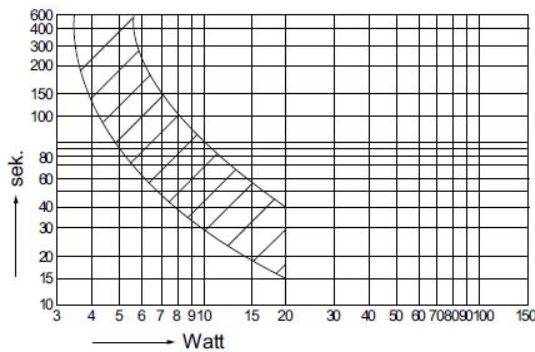
Ts = Surface Temperature

For ceramic case resistors, the solderability of connecting wires is limited in the range of 5 mm

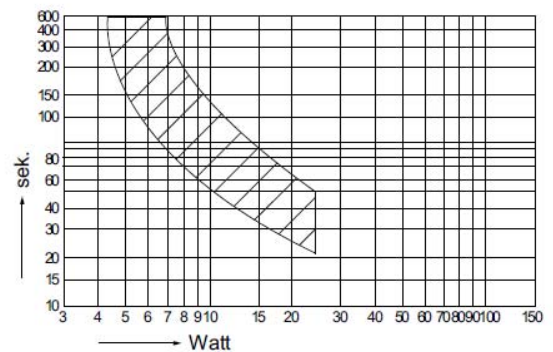
GENERAL FEATURES

Style	FTH 09020 (FTH 09018)	FTH 09025	FTH 0938	FTH 0950	FTH 0975
Dimensions L=	20 ±1 mm (18 ±1 mm)	25 ±1 mm	38 ±1 mm	50 ±1 mm	75 ±1 mm
Carrier	Fiber glass core				
Resistance range	R11 - 9K1	R20 - 18K	R33 - 33K	R47 - 47K	R82 - 82K
Resistance tolerances	K (±10%) J (±5%) ≥R33	K (±10%) J (±5%) ≥R47	K (±10%) J (±5%) ≥1R0	K (±10%) J (±5%) ≥1R2	K (±10%) J (±5%) ≥2R0
Power rating P_N	1,5 W	4,0 W	5,5 W	7,0 W	10,0 W
Dissipation at $T_a=25^{\circ}\text{C}$	1,5 W	4,0 W	5,5 W	7,0 W	10,0 W
Dissipation at $T_a=70^{\circ}\text{C}$	1,0 W	2,5 W	3,5 W	4,3 W	6,2 W
Repair-solder (fusible)	Sn99Cu1 (according to ROHS)				
Fixing pieces	SC 10; SC 25; SY 8,5; SY 8,5/1				
Marking	Cipher stamped, the marking of values according to DIN/IEC 62				

FUSE TIME

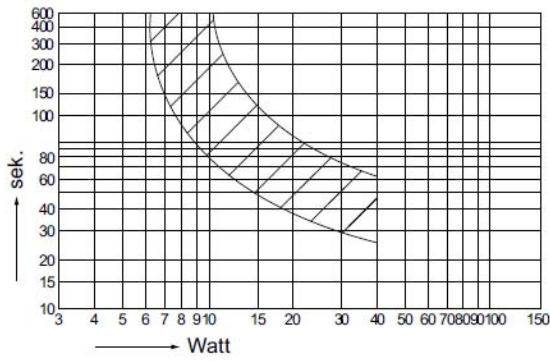


**FTH 0920
(FTH 0918)**

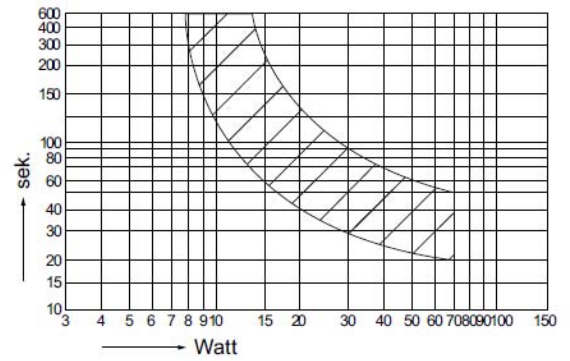


FTH 0925

FUSE TIME

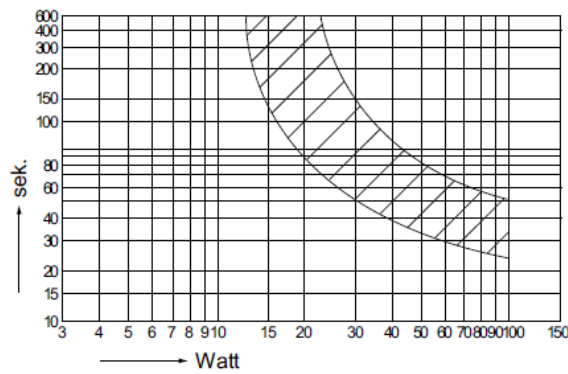


FTH 0938



FTH 0950

FUSE TIME



FTH 0975